

Transistor Outline (TO-220)

Technical drawing of a connector assembly, showing dimensions in inches and millimeters.

Top View Dimensions:

- Overall width: $0.100-0.120$ [2.54-3.05]
- Overall height: $0.400^{+0.015}_{-0.005}$ [10.16 $^{+0.38}_{-0.13}$]
- Pin #1 ID diameter: $\varnothing 0.149-0.153$ [3.78-3.89]
- Pin #1 ID diameter tolerance: 0.050 [1.27] MAX
- Pin #1 ID diameter tolerance: $0.090-0.110$ [2.29-2.79]
- Pin #1 ID diameter tolerance: $0.190-0.210$ [4.83-5.33]
- Pin #1 ID diameter tolerance: $0.240-0.260$ [6.10-6.60]
- Pin #1 ID diameter tolerance: $0.330-0.350$ [8.38-8.89]

Side View Dimensions:

- Overall height: $0.175-0.185$ [4.45-4.70]
- Seating Plane: $0.048-0.052$ [1.22-1.32]
- Pin #1 ID diameter: $0.105^{+0.010}_{-0.015}$ [2.67 $^{+0.25}_{-0.38}$]
- Pin #1 ID diameter tolerance: 0.305 [7.75] MIN
- Pin #1 ID diameter tolerance: $0.015^{+0.007}_{-0.001}$ [0.38 $^{+0.18}_{-0.03}$]
- Pin #1 ID diameter tolerance: $0.027-0.037$ [0.69-0.94] TYP

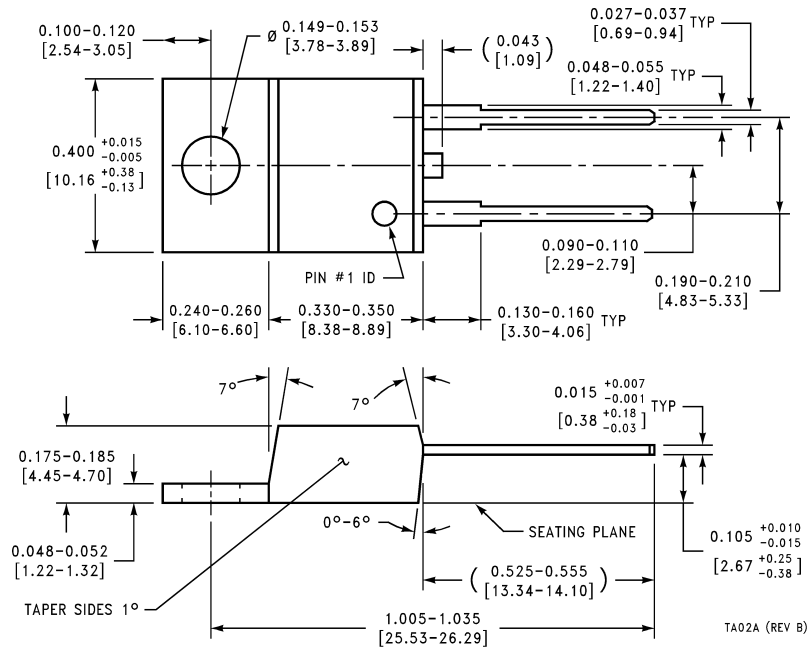
Detail View Dimensions:

- Overall height: $0.048-0.055$ [1.22-1.40] TYP

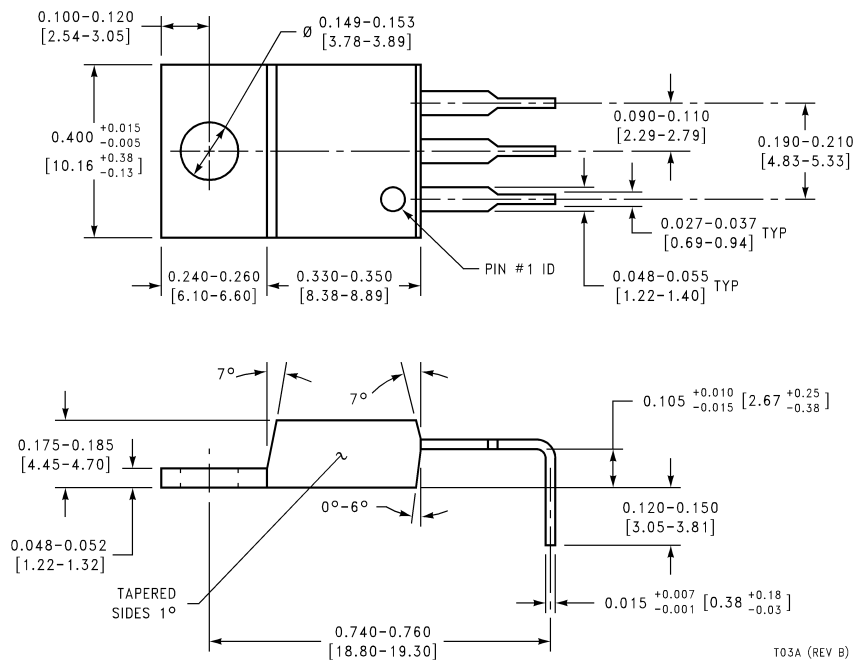
Angles:

- 7°
- 7°
- 0°-6°
- TAPERED SIDES 1°

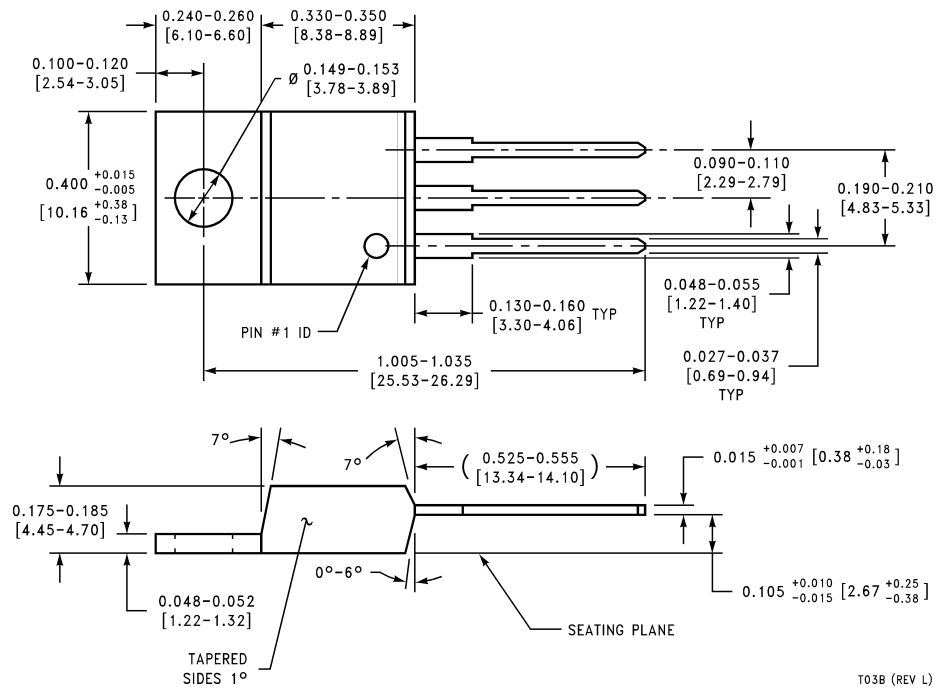
2 Lead Molded TO-220 NS Package Number TA02A



3 Lead Molded TO-220 NS Package Number T03A



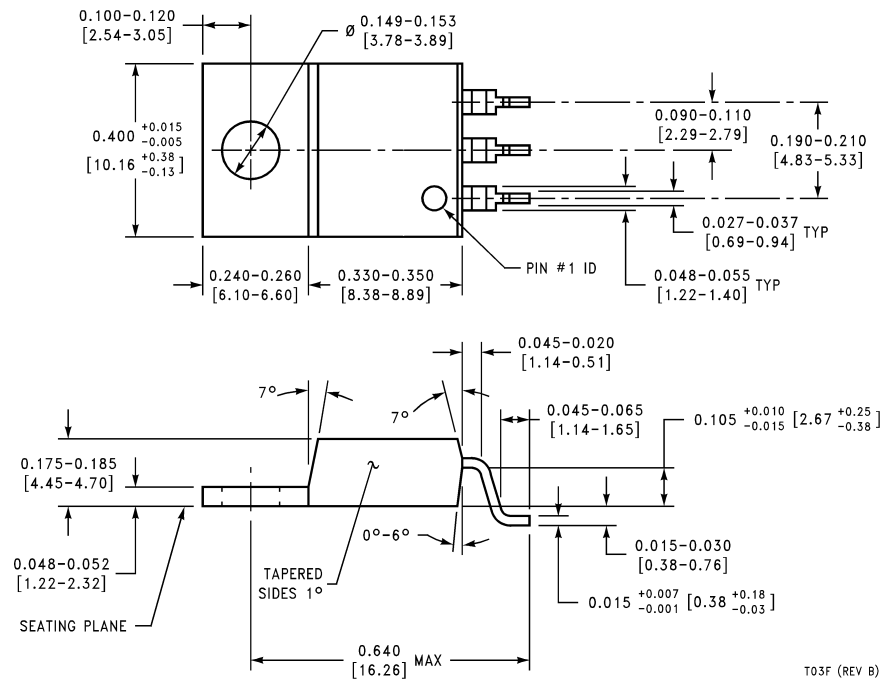
3 Lead Molded TO-220 NS Package Number T03B



**3 Lead Molded TO-220
NS Package Number T03D**

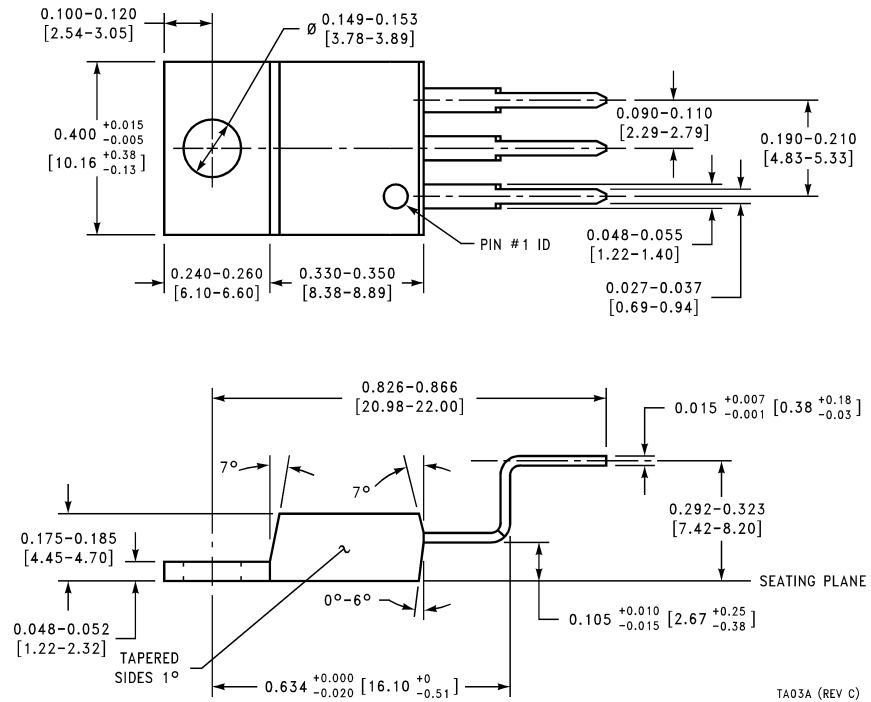


**3 Lead Molded TO-220
NS Package Number T03F**

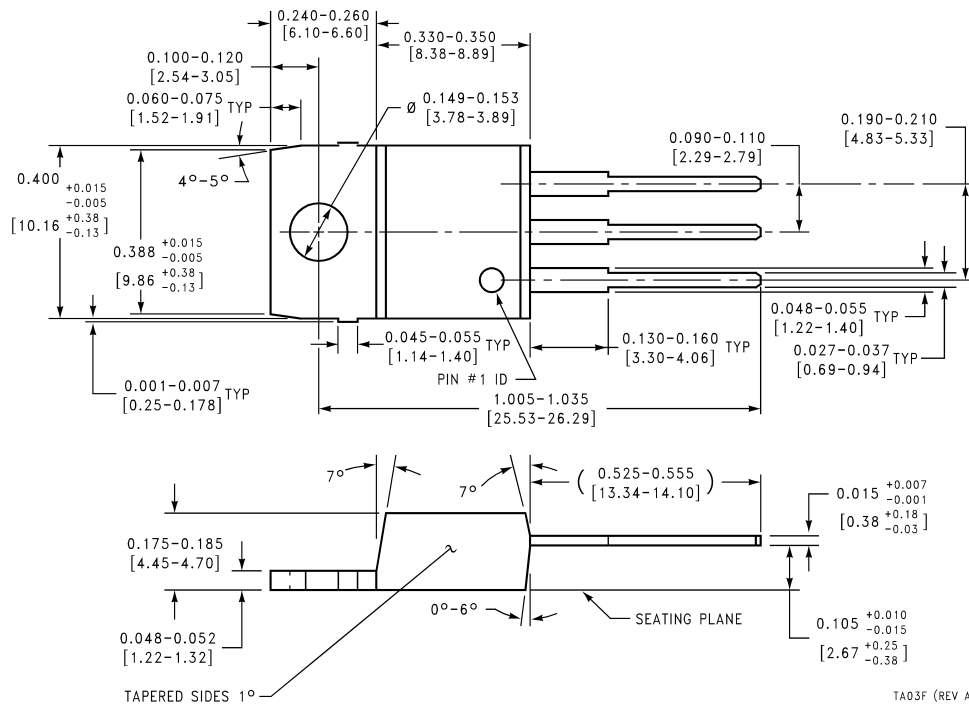


T03F (REV B)

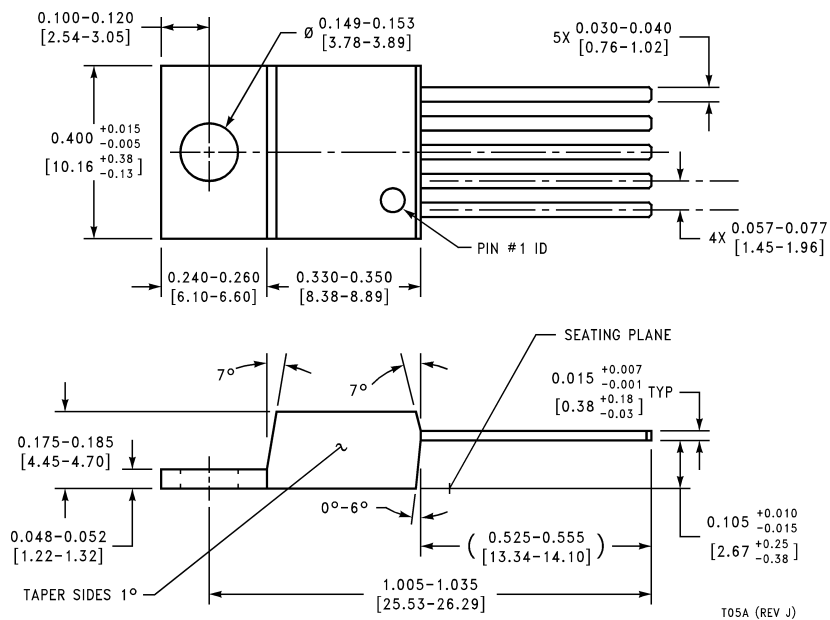
3 Lead Molded TO-220 NS Package Number TA03A



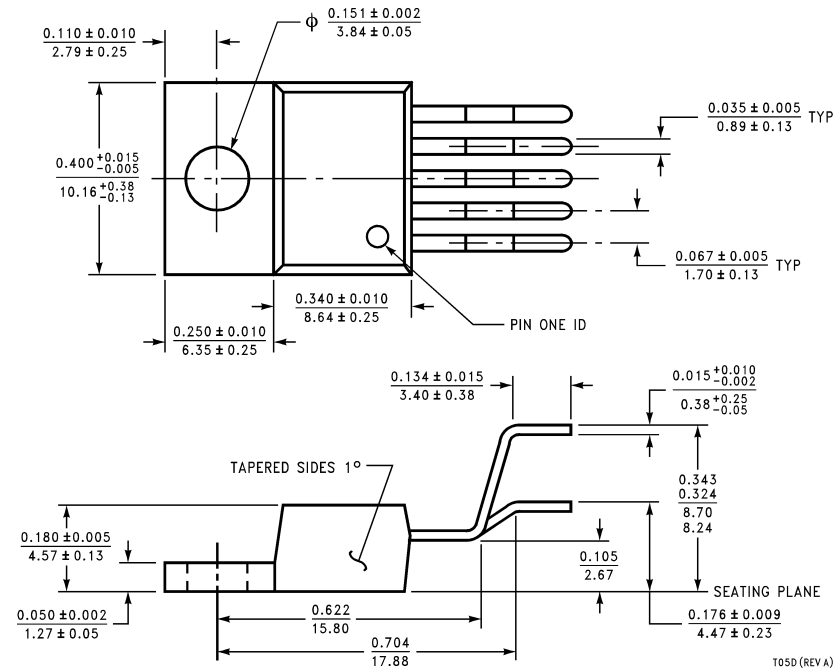
**3 Lead Molded TO-220
NS Package Number TA03F**



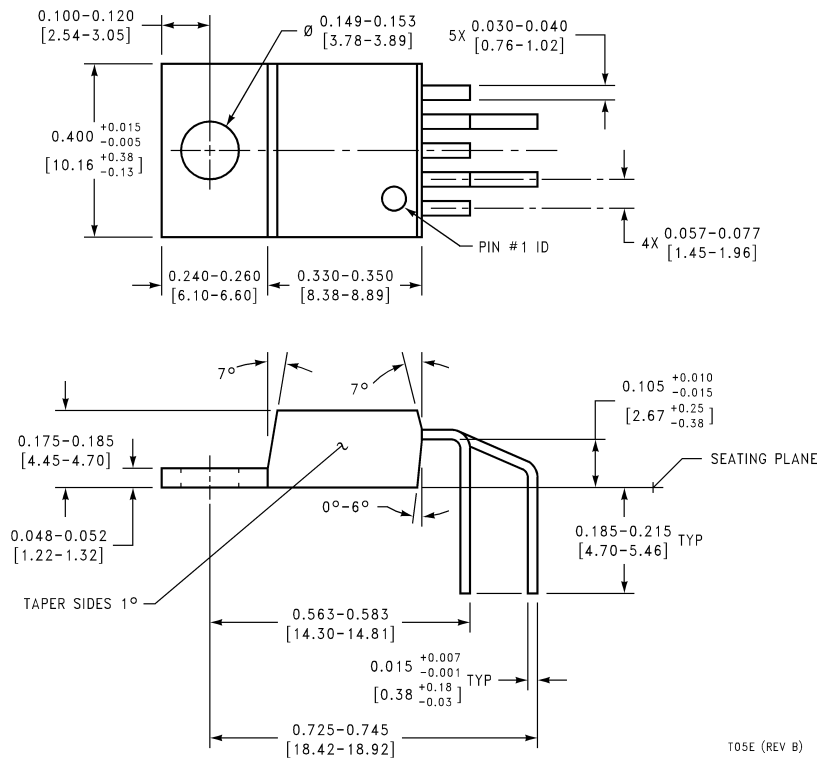
**5 Lead Molded TO-220
NS Package Number T05A**



**5 Lead Molded TO-220
NS Package Number T05D**



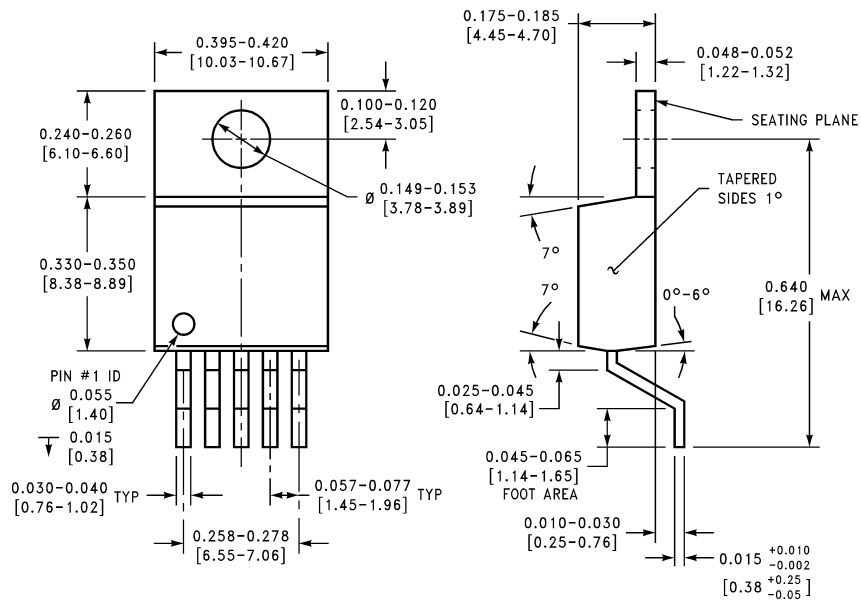
**5 Lead Molded TO-220
NS Package Number T05E**



**5 Lead Molded TO-220
NS Package Number T05F**

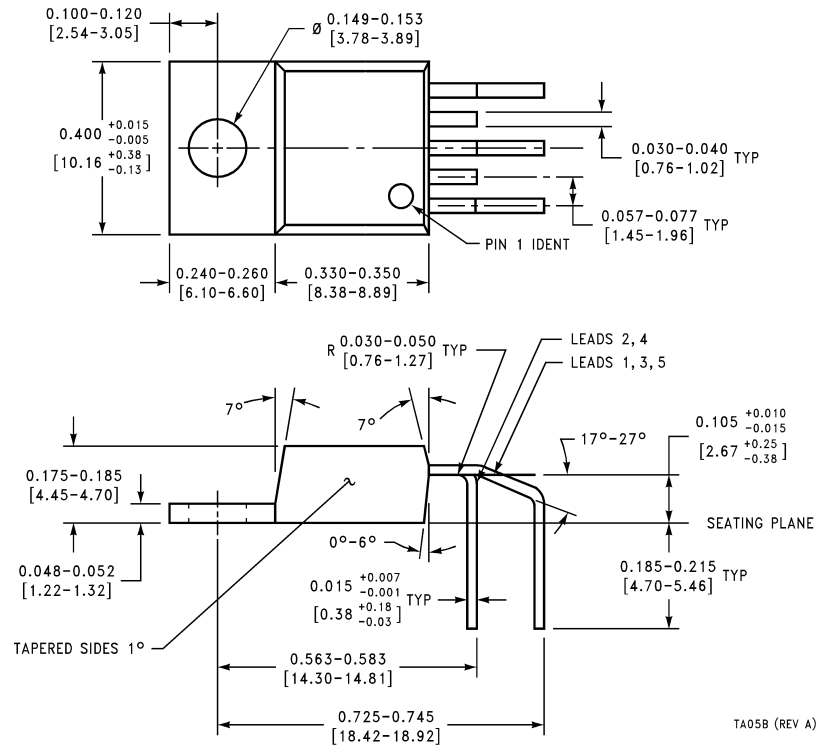


5 Lead Molded TO-220
NS Package Number TA05A

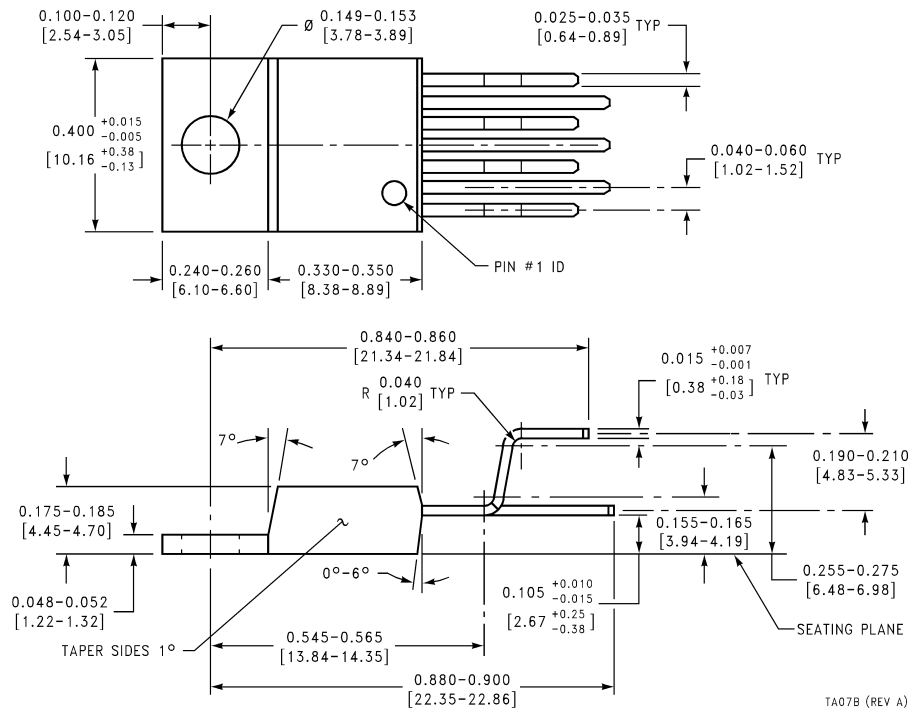


TA05A (REV A)

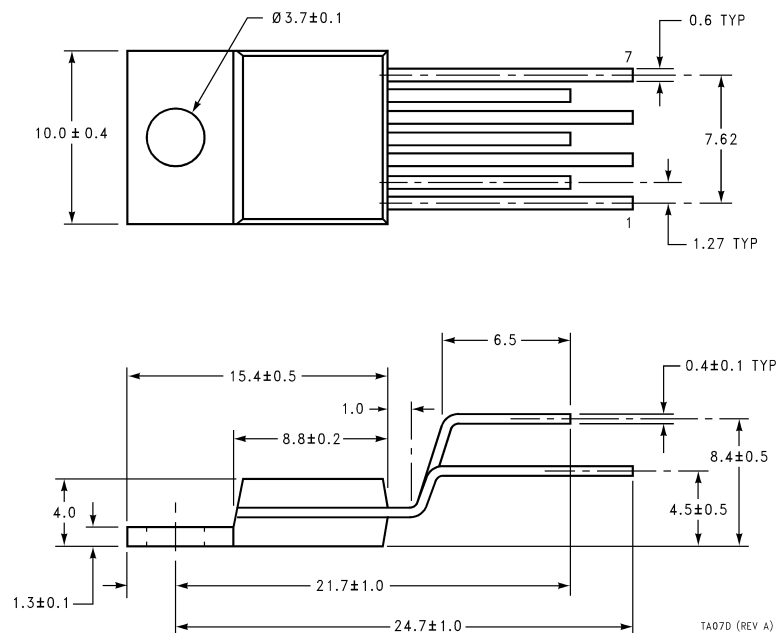
**5 Lead Molded TO-220
NS Package Number TA05B**



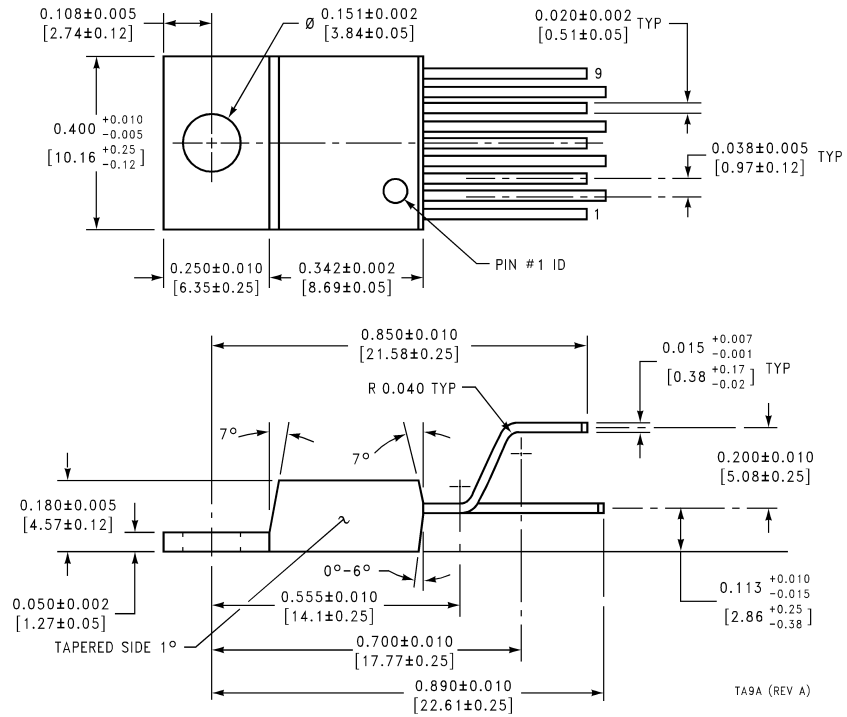
7 Lead Molded TO-220 NS Package Number TA07B



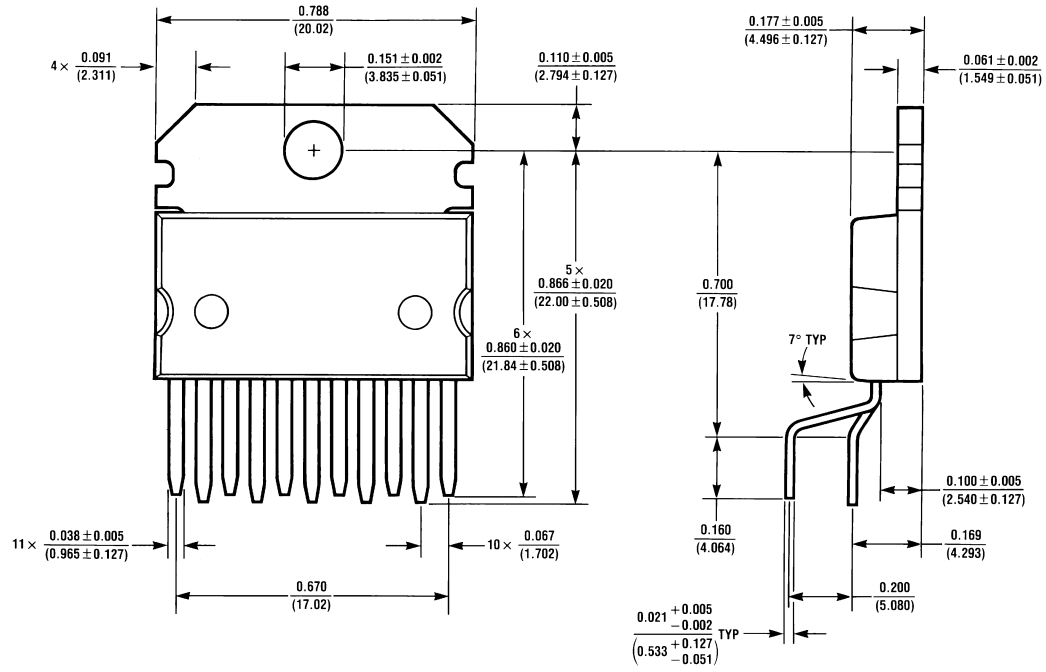
7 Lead Molded TO-220 NS Package Number TA07D



**9 Lead Molded TO-220
NS Package Number TA9A**

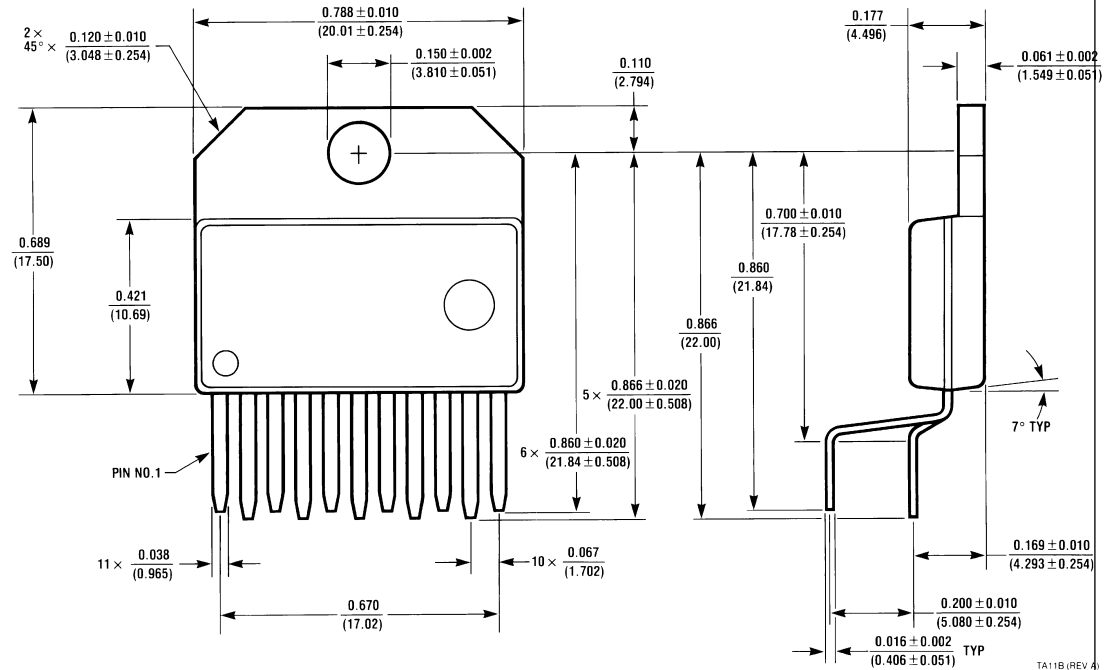


**11 Lead Molded TO-220
NS Package Number TA11A**



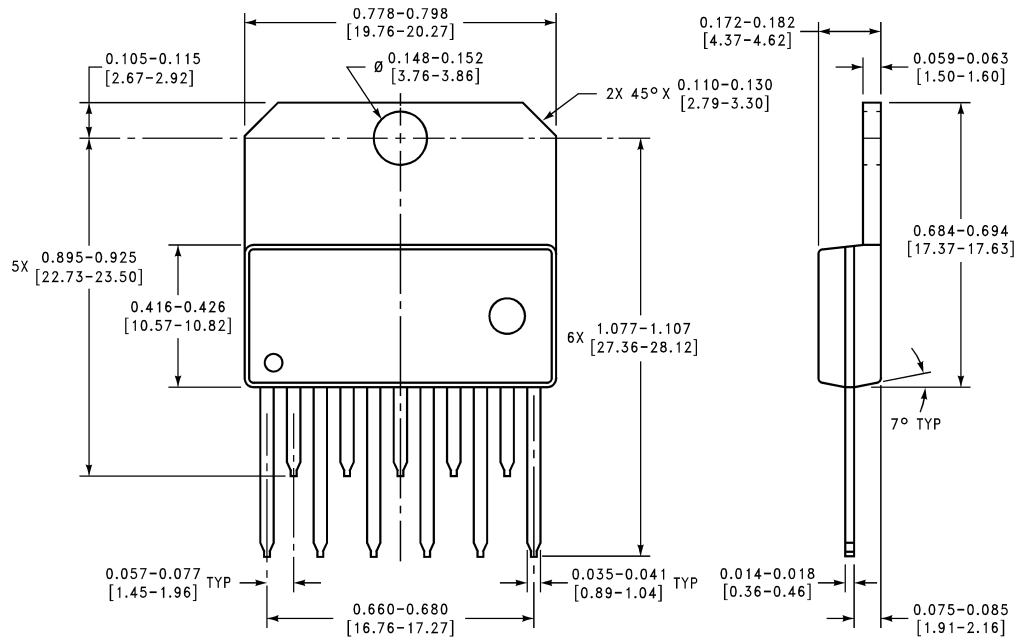
TA11A (REV C)

**11 Lead Molded TO-220
NS Package Number TA11B**



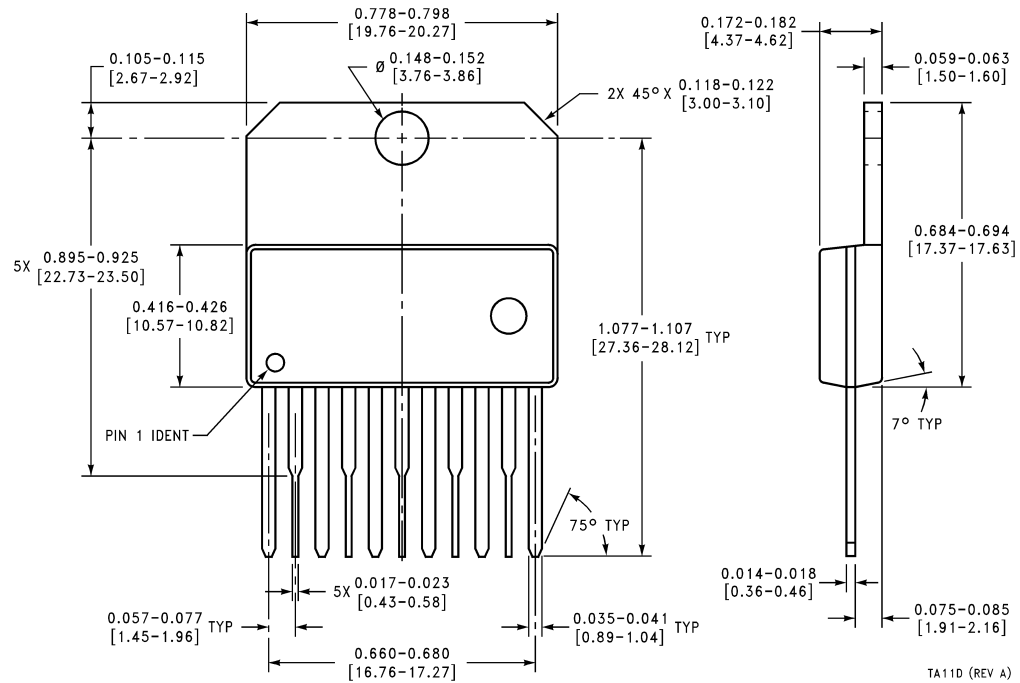
TA11B (REV A)

**11 Lead Molded TO-220
NS Package Number TA11C**

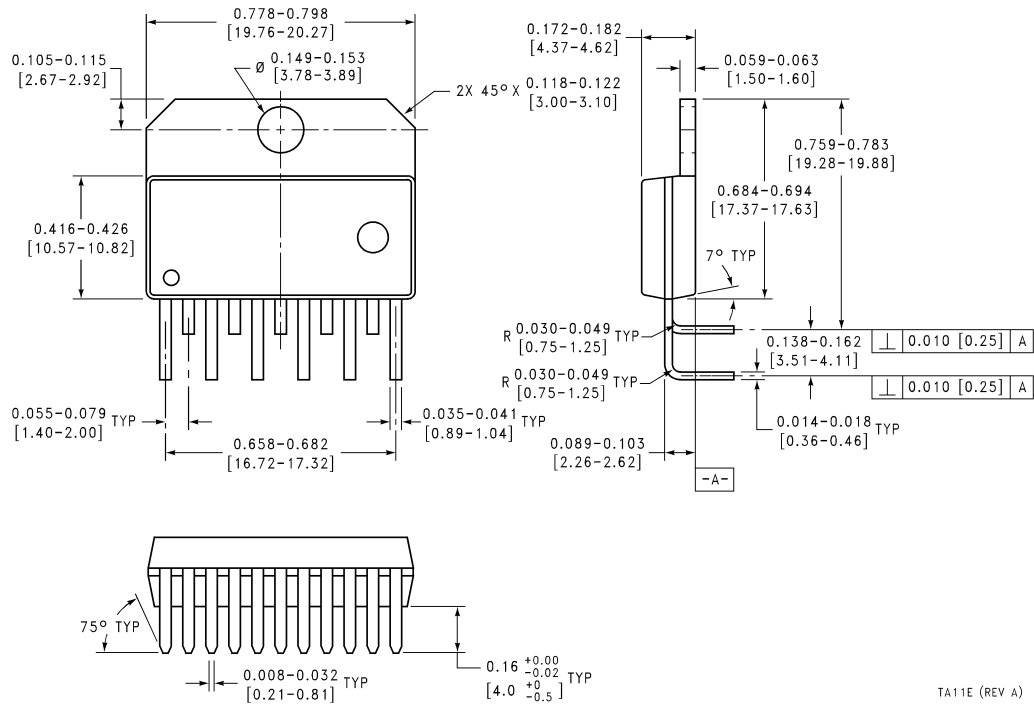


TA11C (REV A)

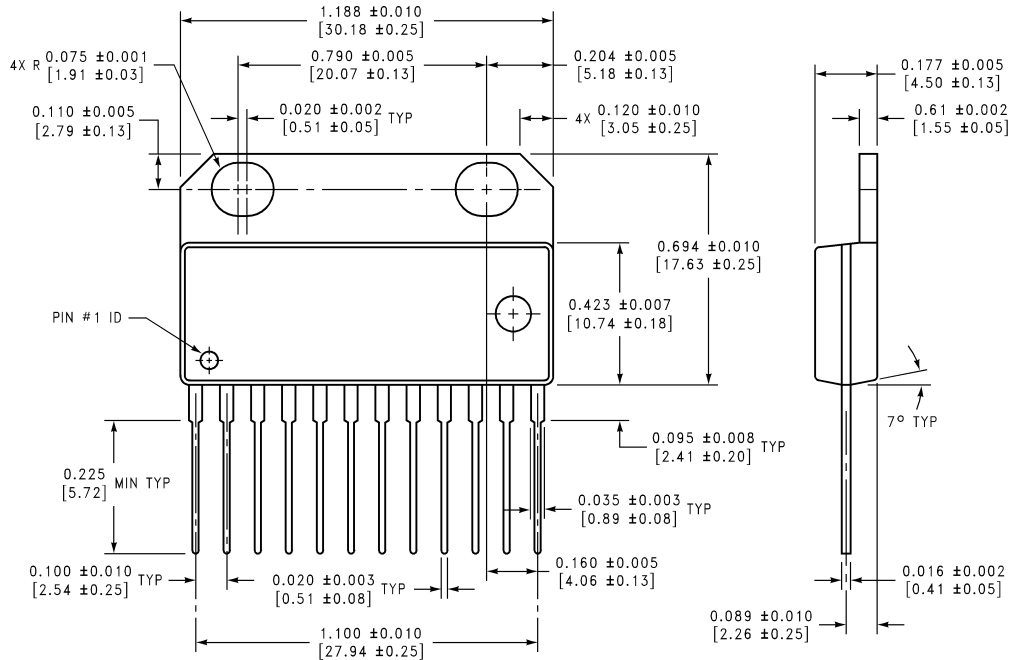
**11 Lead Molded TO-220
NS Package Number TA11D**



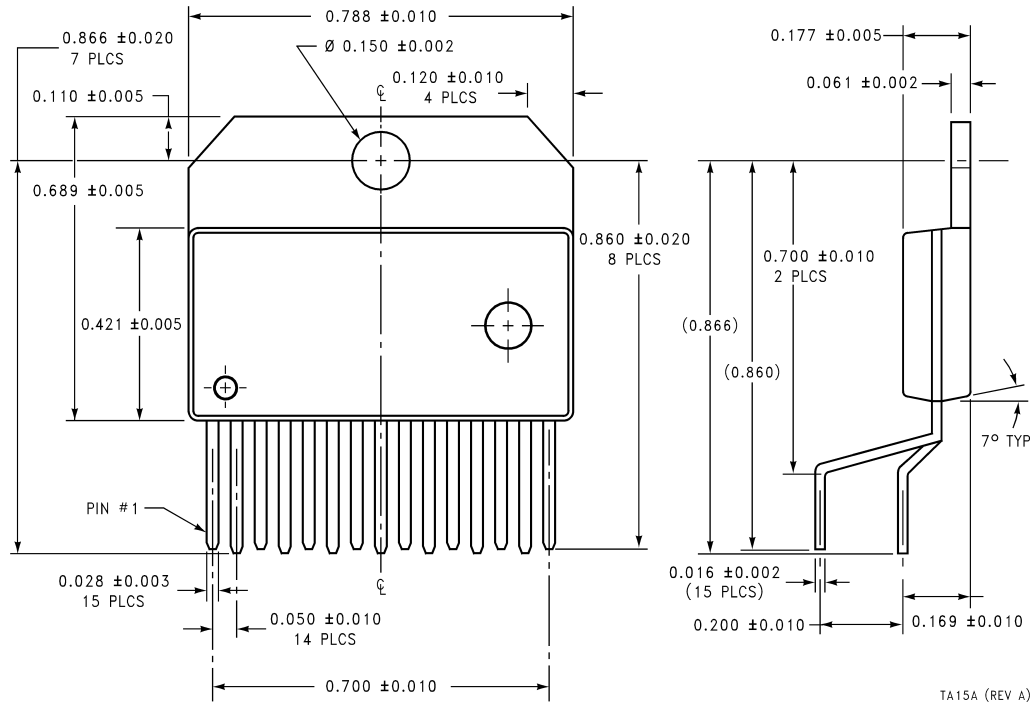
11 Lead Molded TO-220 **NS Package Number TA11E**



**12 Lead Molded TO-220
NS Package Number TA12A**

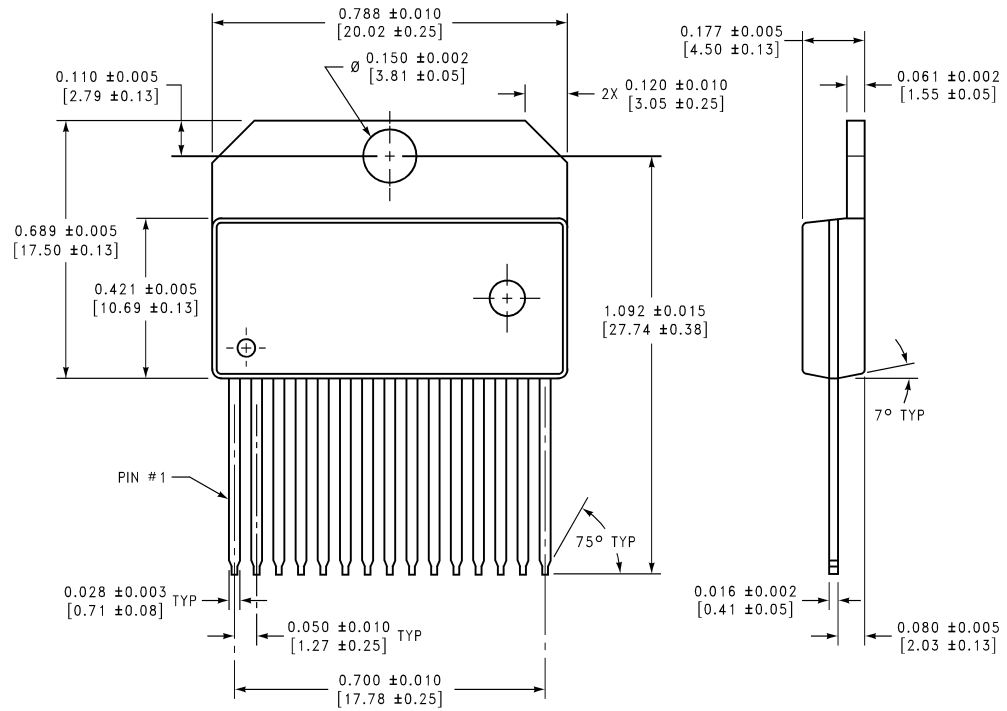


15 Lead Molded TO-220
NS Package Number TA15A



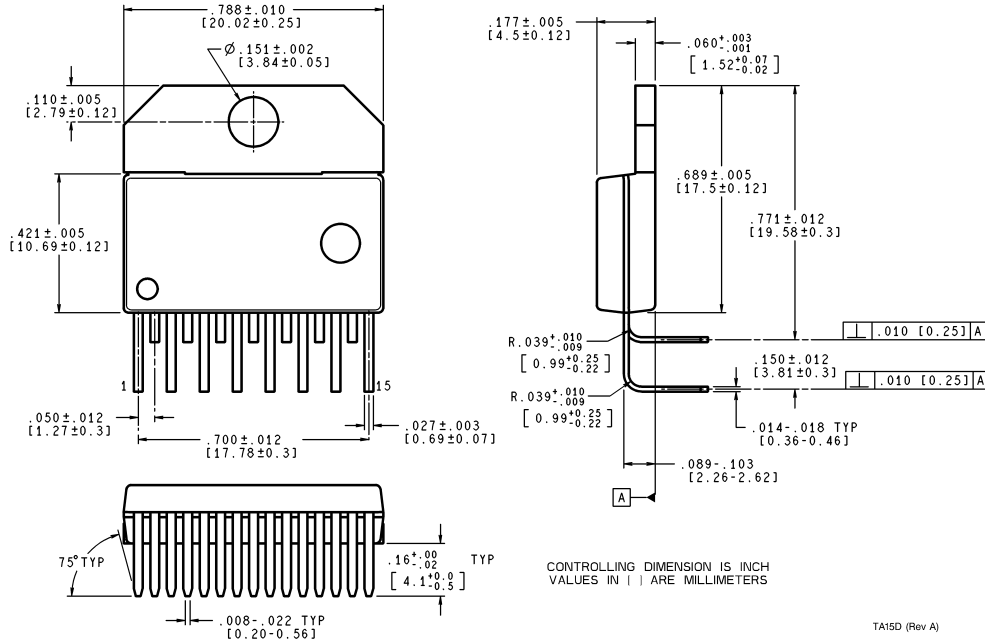
TA15A (REV A)

15 Lead Molded TO-220
NS Package Number TA15B

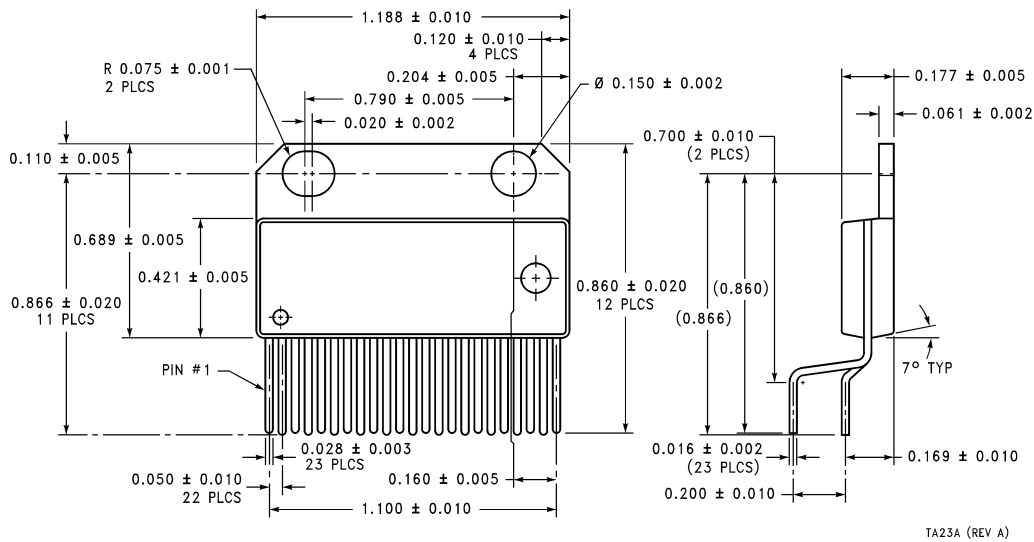


TA15B (REV A)

15 Lead Molded TO-220 NS Package Number TA15D



23 Lead Molded TO-220 NS Package Number TA23A



Notes

LIFE SUPPORT POLICY

NATIONAL'S PRODUCTS ARE NOT AUTHORIZED FOR USE AS CRITICAL COMPONENTS IN LIFE SUPPORT DEVICES OR SYSTEMS WITHOUT THE EXPRESS WRITTEN APPROVAL OF THE PRESIDENT AND GENERAL COUNSEL OF NATIONAL SEMICONDUCTOR CORPORATION. As used herein:

1. Life support devices or systems are devices or systems which, (a) are intended for surgical implant into the body, or (b) support or sustain life, and whose failure to perform when properly used in accordance with instructions for use provided in the labeling, can be reasonably expected to result in a significant injury to the user.
2. A critical component is any component of a life support device or system whose failure to perform can be reasonably expected to cause the failure of the life support device or system, or to affect its safety or effectiveness.



National Semiconductor Corporation
Americas
Tel: 1-800-272-9959
Fax: 1-800-737-7018
Email: support@nsc.com

www.national.com

National Semiconductor Europe

Fax: +49 (0) 1 80-530 85 86
Email: europe.support@nsc.com
Deutsch Tel: +49 (0) 1 80-530 85 85
English Tel: +49 (0) 1 80-532 78 32
Français Tel: +49 (0) 1 80-532 93 58
Italiano Tel: +49 (0) 1 80-534 16 80

National Semiconductor Asia Pacific Customer Response Group

Tel: 65-2544466
Fax: 65-2504466
Email: sea.support@nsc.com

National Semiconductor Japan Ltd.

Tel: 81-3-5639-7560
Fax: 81-3-5639-7507